

An architectural rendering of a modern, multi-story residential building with a white facade and numerous balconies. The building is set against a backdrop of a blue sky with scattered white clouds. In the foreground, there are several palm trees and a lush garden with purple and pink flowers. A paved road with a few cars is visible on the right side of the image. The overall scene is bright and sunny, suggesting a tropical or coastal location.

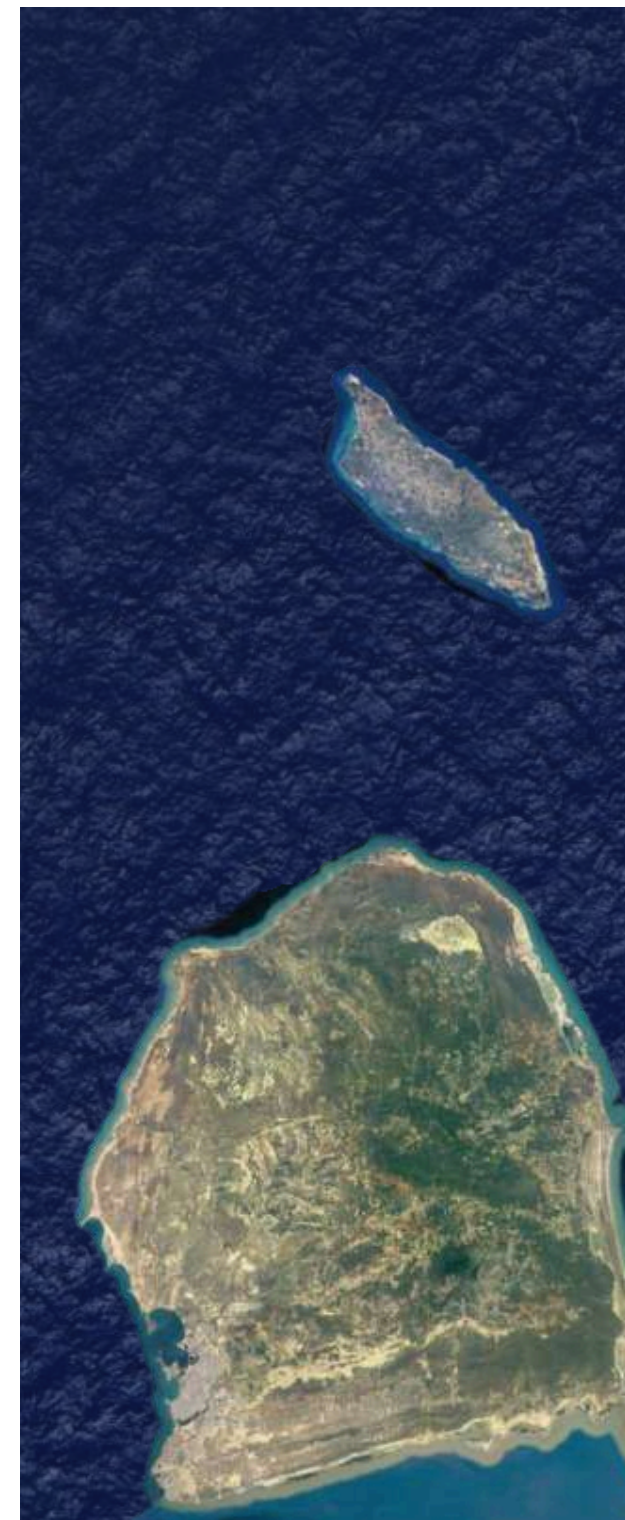
THE VIEW

RESORT & MARINA

BROCHURE

TABLE OF CONTENTS

Highlights	4
About Curaçao	6
Curaçao Highlights	8
About The View	10
Location	12
Floor plans & Furnishings	14
2-Bedroom Apartment	16
3-Bedroom Apartment	18
Penthouses	20
The Marina	22
At a Glance	24



THE ABC ISLANDS



THE VIEW

RESORT & MARINA

THE
VIEW
RESORT & MARINA



113 luxurious vacation apartments in a modern, tropical style.



2 bedroom, 2½ bathroom apartments (180m²).



3 bedroom, 3½ bathroom apartments (242m²).



Premium furnishings available with optional furniture packages.



Stunning sea and marina views from the balcony.



Prime location in the vibrant Piscadera district, just 10 minutes from Willemstad.



Easy access to nearby public beaches, crystal-clear waters, and watersport activities.



Exclusive marina with 126 berths for yachts up to 150 ft.



Relaxation guaranteed: Swimming pool and gym.



Culinary delights: Restaurants and bar in Marina Village.

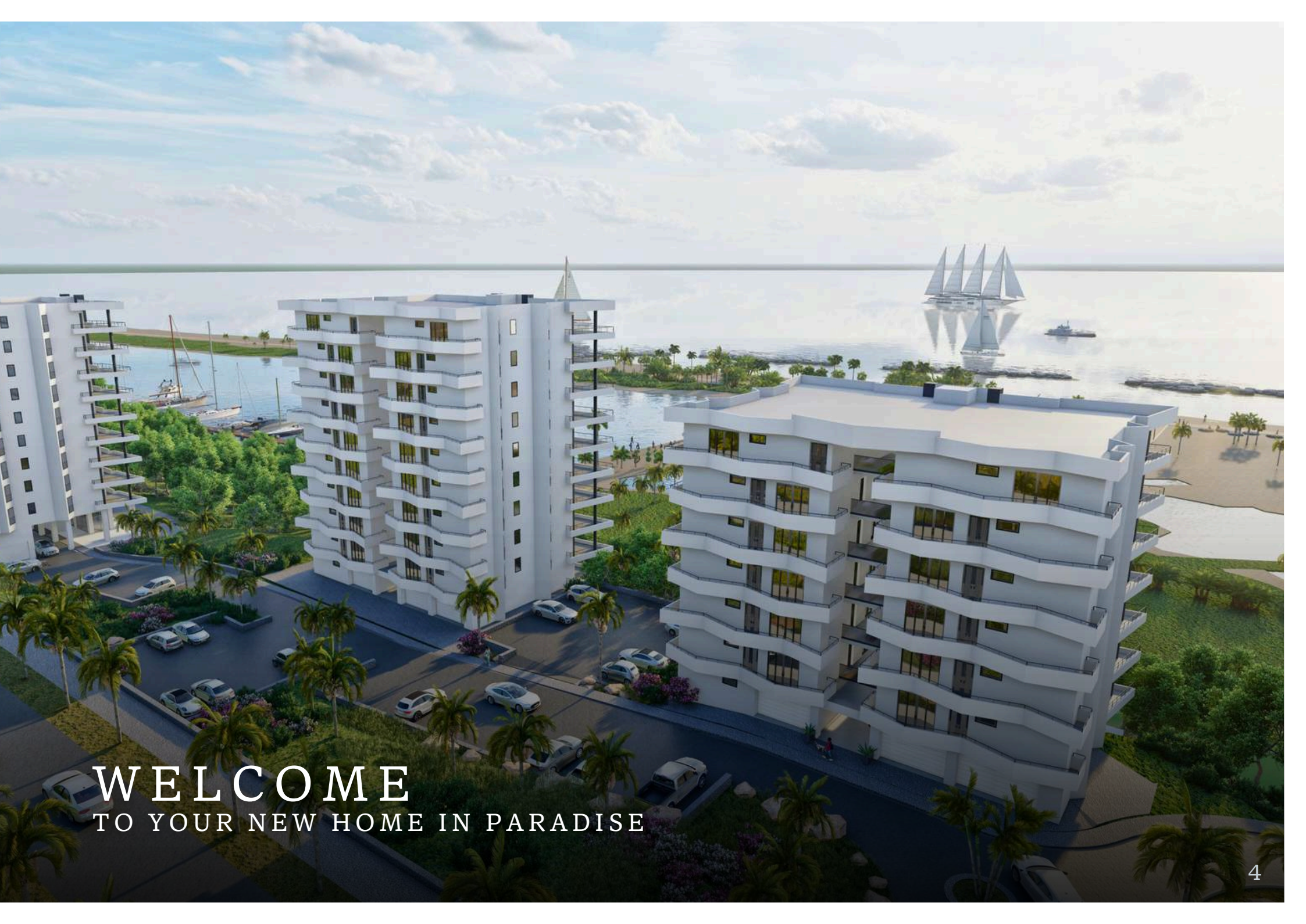


Attractive investment opportunity with rental management services.



High return potential with rising demand for luxury vacation homes.





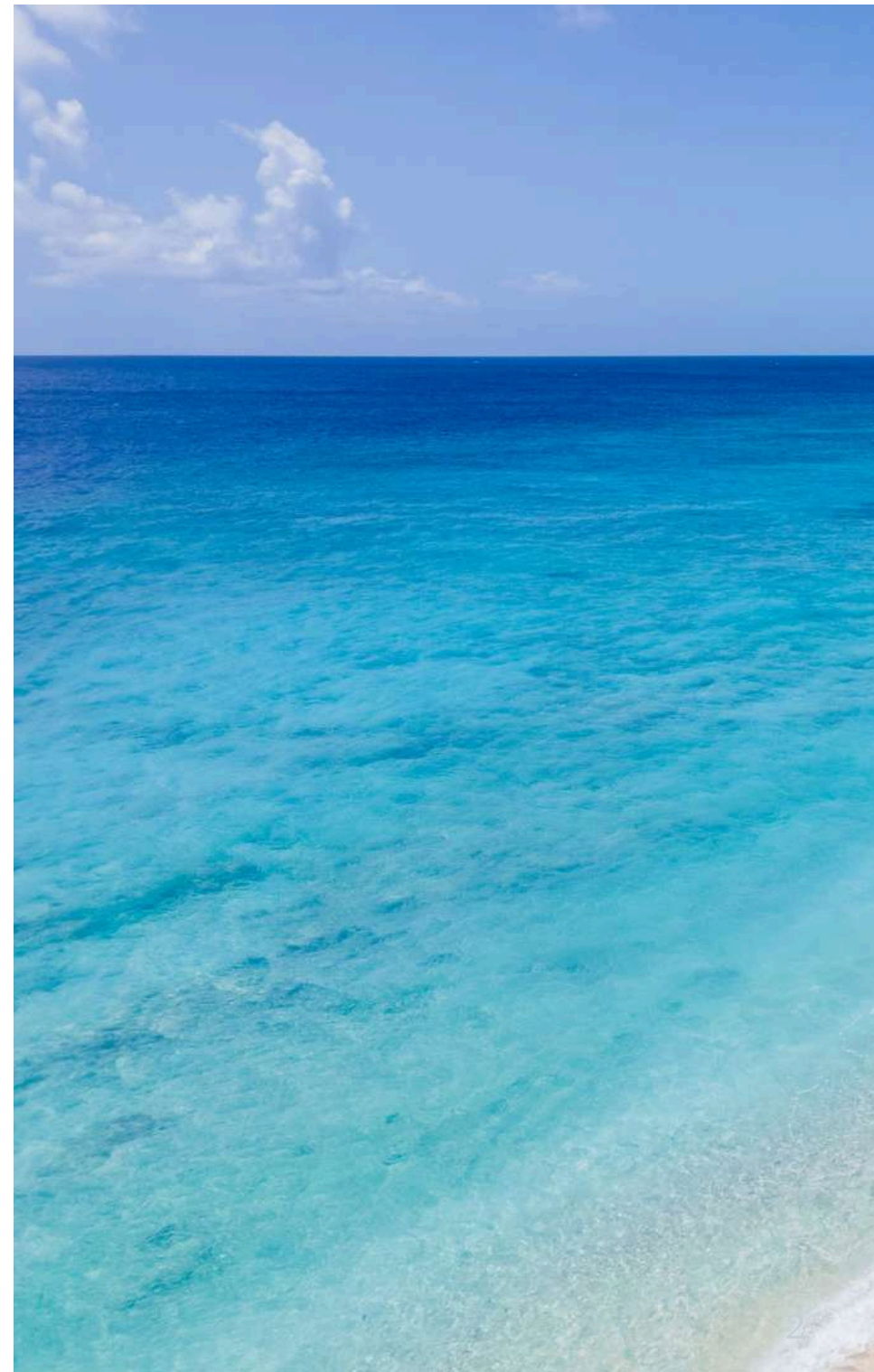
WELCOME
TO YOUR NEW HOME IN PARADISE

BON BINI CURAÇAO

The idyllic island of Curaçao is nestled in the southern Dutch-Caribbean, surrounded by gentle turquoise waters and stunning beaches.

Located just off the coast of Venezuela, Curaçao offers a perfect getaway all year round. Its ideal location allows for a peaceful and relaxing vacation amidst breathtaking coastal landscapes. With countless activities and exceptional dining options, this impressive island is a true haven for everyone.

Curaçao is known for its distinct regions, each with its own unique charm. From the lively streets of Willemstad to the serene shores of its hidden beaches, every part of the island offers easy access to popular attractions. With over 65 diving sites, a vast network of hiking and biking trails, and panoramic views of the Caribbean, Curaçao is an expansive playground for outdoor enthusiasts and adventurers alike.





Curaçao offers everything you could want in a tropical paradise. Get ready to enjoy sun-soaked beaches with crystal-clear waters, perfect for swimming, snorkeling, and diving. The island is home to modern beach resorts and charming seaside restaurants. Whether you're a beginner or an experienced diver, Curaçao's coral reefs and marine parks provide an unforgettable underwater experience.

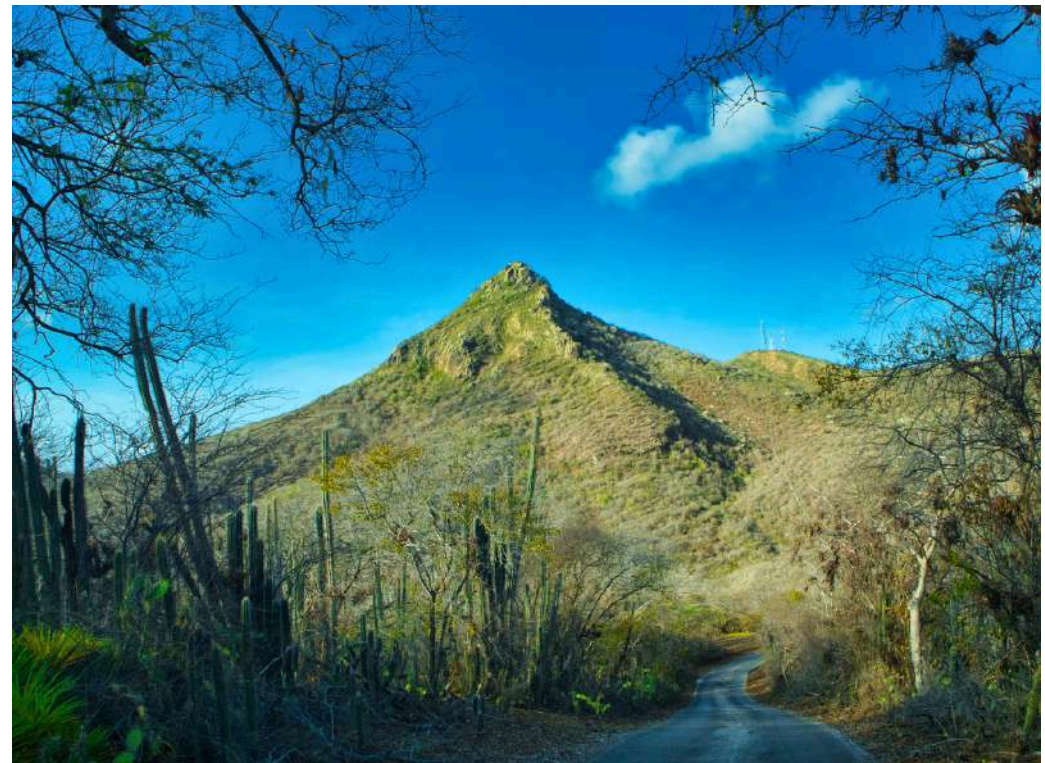
The island is ideal for families, with activities for all ages, and has been recognized as one of the Caribbean's best destinations. Curaçao's beautiful landscapes, from its vibrant city of Willemstad to its tranquil bays, offer a dream tropical escape.

Beyond the beaches, Curaçao offers a variety of experiences in its stunning natural environment. You can go hiking, take a scenic bike ride, or explore the island's rich cultural heritage. The island also delights food lovers with a unique blend of local flavors, combining Caribbean and international influences to create a culinary experience that is both delicious and authentic.

CURAÇAO HIGHLIGHTS

- Explore Curaçao's stunning coral reefs with over 65 diving sites and vibrant marine life
- Exciting jet ski tours along the coastline
- Guided ATV adventures through Curaçao's rugged landscapes





- Hiking in Christoffel National Park, discovering unique flora and fauna
- Kayaking through hidden mangroves and lagoons
- Stand-up paddleboarding in tranquil bays
- And so much more...

ABOUT THE VIEW

The View Resort & Marina is an exclusive residential real estate project, developed by a renowned team with extensive experience in luxury properties on Curaçao. Located in the Piscadera district, this premium development offers breathtaking views of the Caribbean Sea and direct access to our state-of-the-art marina. Its location provides both privacy and convenience, being just minutes from Willemstad and the island's main attractions.

Residents will enjoy seamless access to the adjacent Marina Village, offering high-end waterfront dining, boutique shopping, and leisure activities. On-site, The View itself offers top-tier amenities such as a fully equipped gym and a shared swimming pool.

With 7 buildings, comprising 113 luxury apartments and 7 penthouses, The View Resort & Marina is designed for permanent residents but also permits both long-term and short-term rentals, providing flexibility for owners. Each unit is finished to the highest standards and boasts spectacular sea views, making it ideal for those seeking a primary residence or a valuable investment opportunity in Curaçao's booming real estate market.

Construction began in 2021, with the first apartments scheduled for completion throughout 2026, and the entire project set to be finalised by the end of 2027.



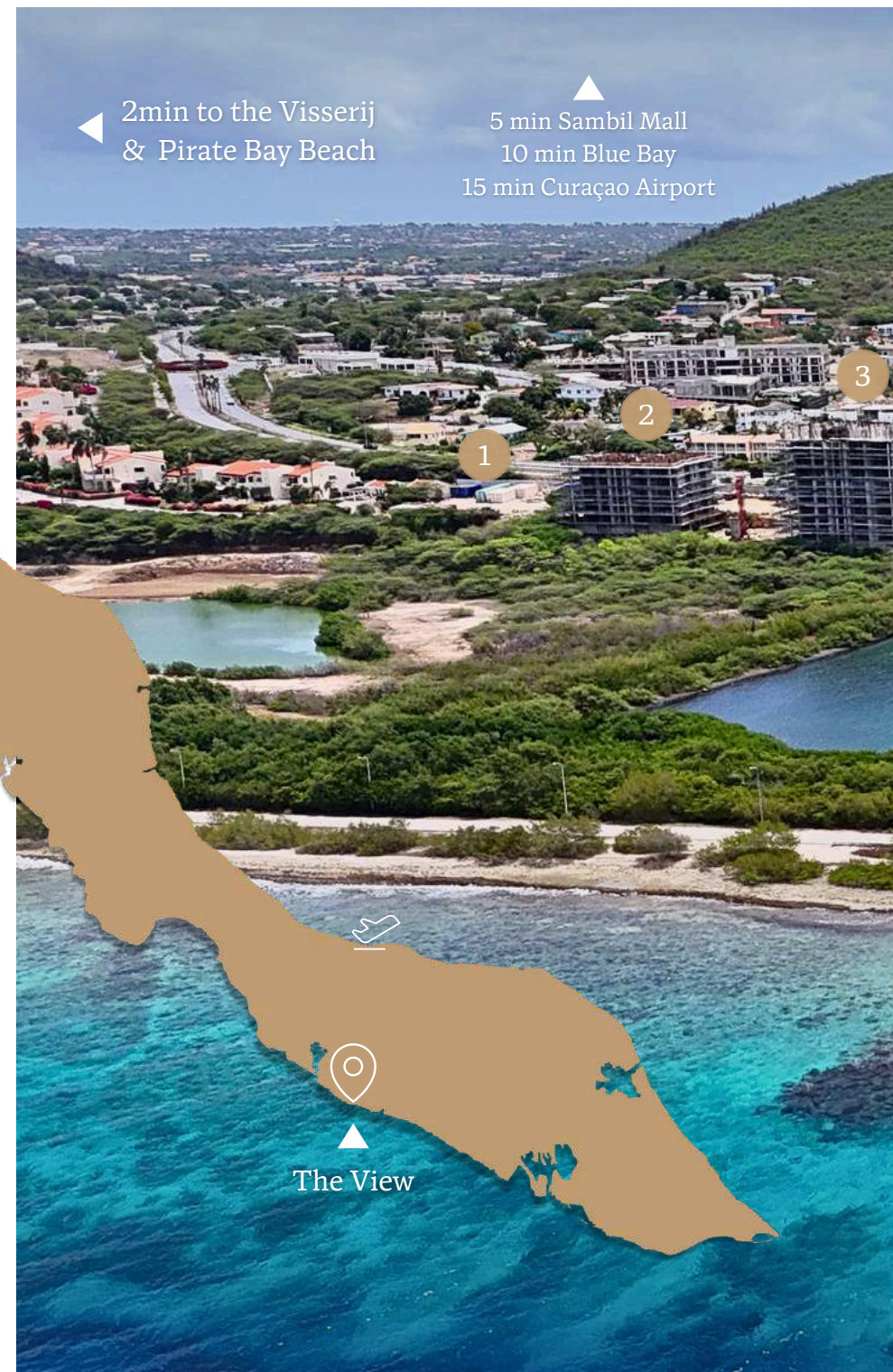


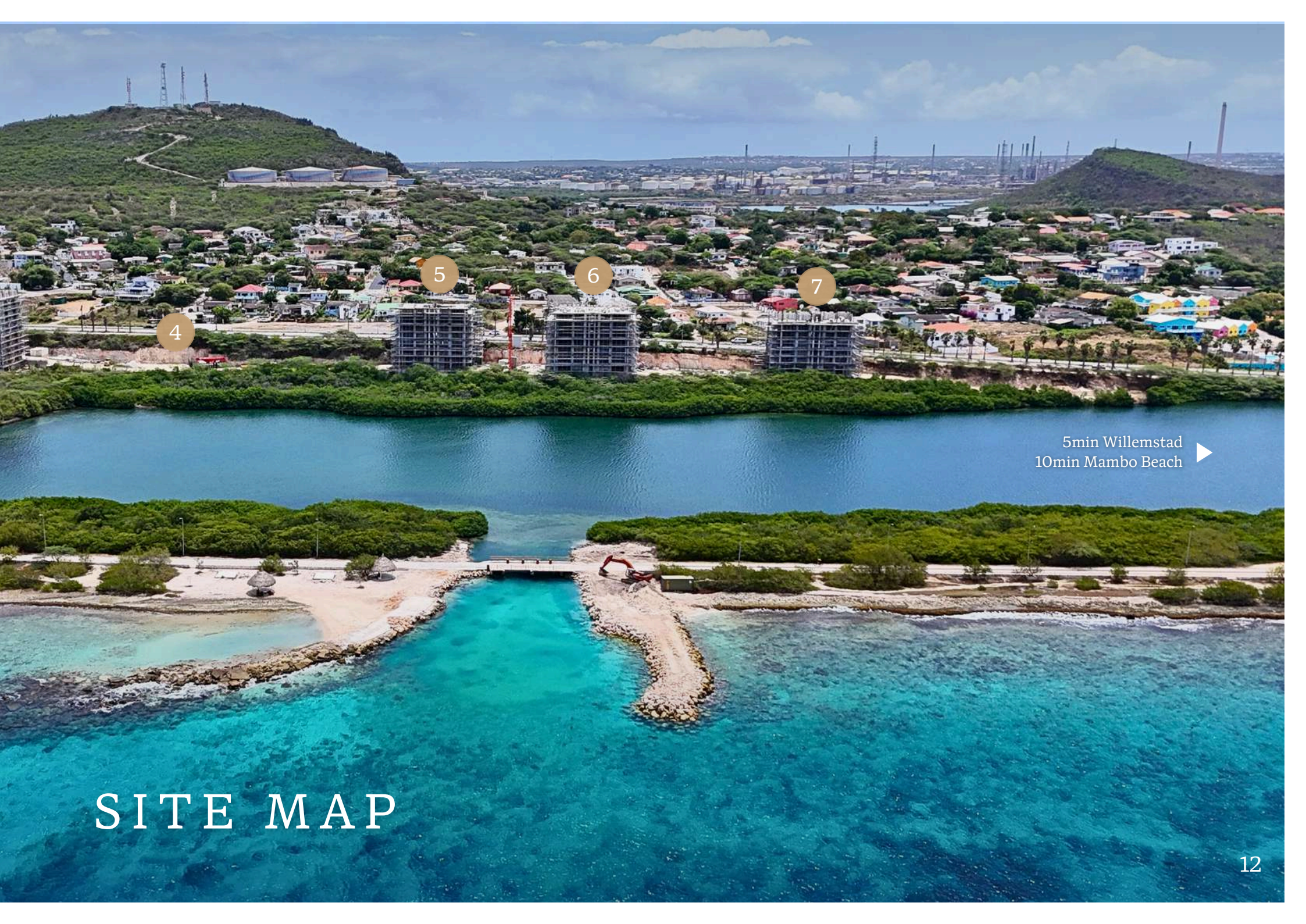
THE VIEW LOCATION

Situated at an A+ oceanfront location, The View is just a short 15 minute drive from the airport and only a 5-minute drive from the UNESCO World Heritage-listed city centre of Willemstad (and the lively districts of Otrobanda, Punda and Pietermaai).

Popular beaches like Blue Bay and Mambo Beach are only 10 minutes away, as is the Blue Bay golf course. Pirate Bay Beach, iconic fish restaurant De Visserij, and Parasasa Beach are all within walking or cycling distance.

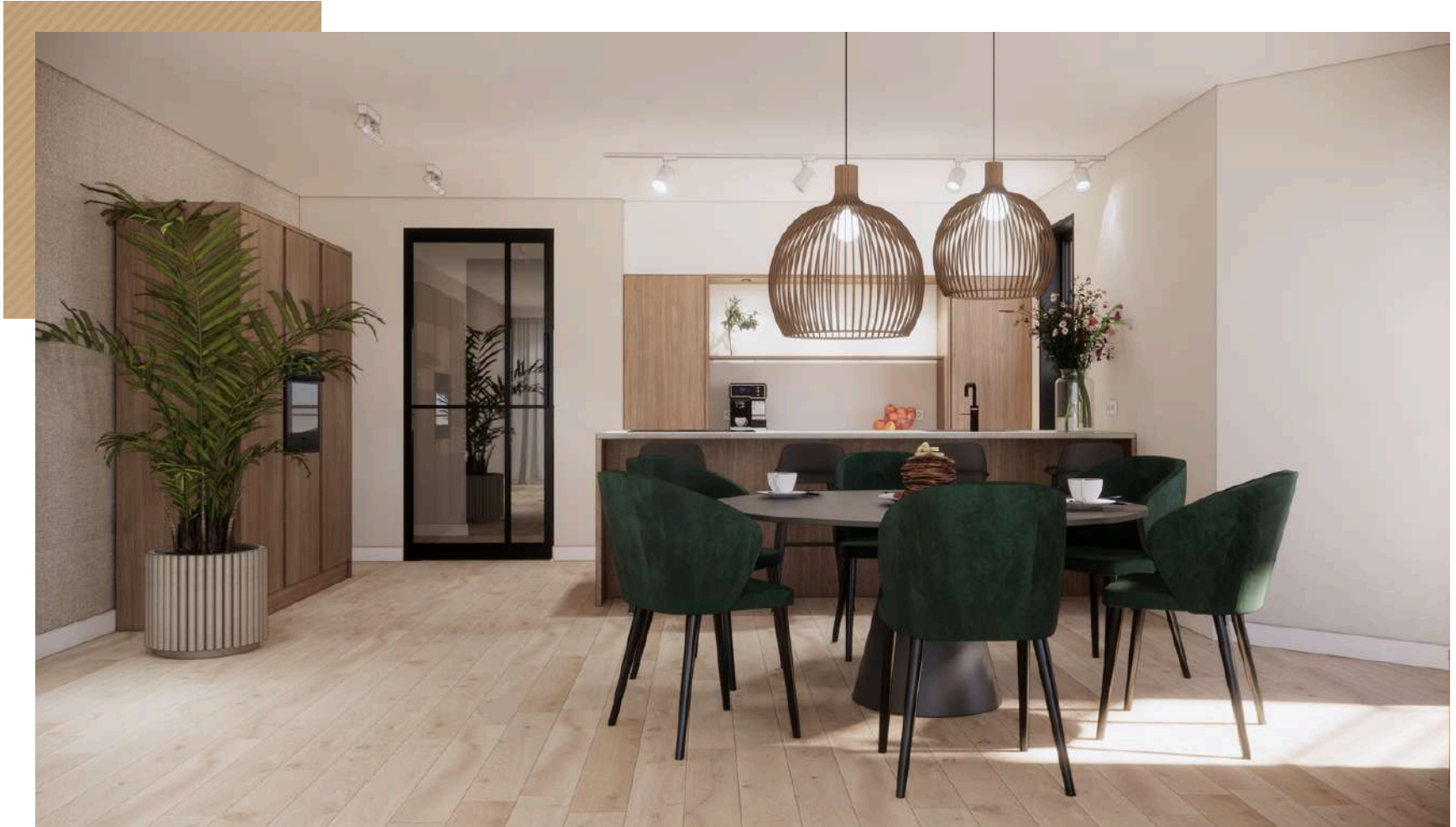
Residents have access to two large supermarkets, including the island's biggest shopping mall, Sambil, just 5 minutes away. Several schools and the University of Curaçao campus are also nearby, as is the local hospital, the Curaçao Medical Centre.





5min Willemstad
10min Mambo Beach ▶

SITE MAP



Turn-key apartments

Fully equipped kitchen with European appliances included, with complete furnishing packages also available as an optional extra.

Open-plan living

Large open kitchen and living rooms open up onto spacious balconies with sweeping ocean views



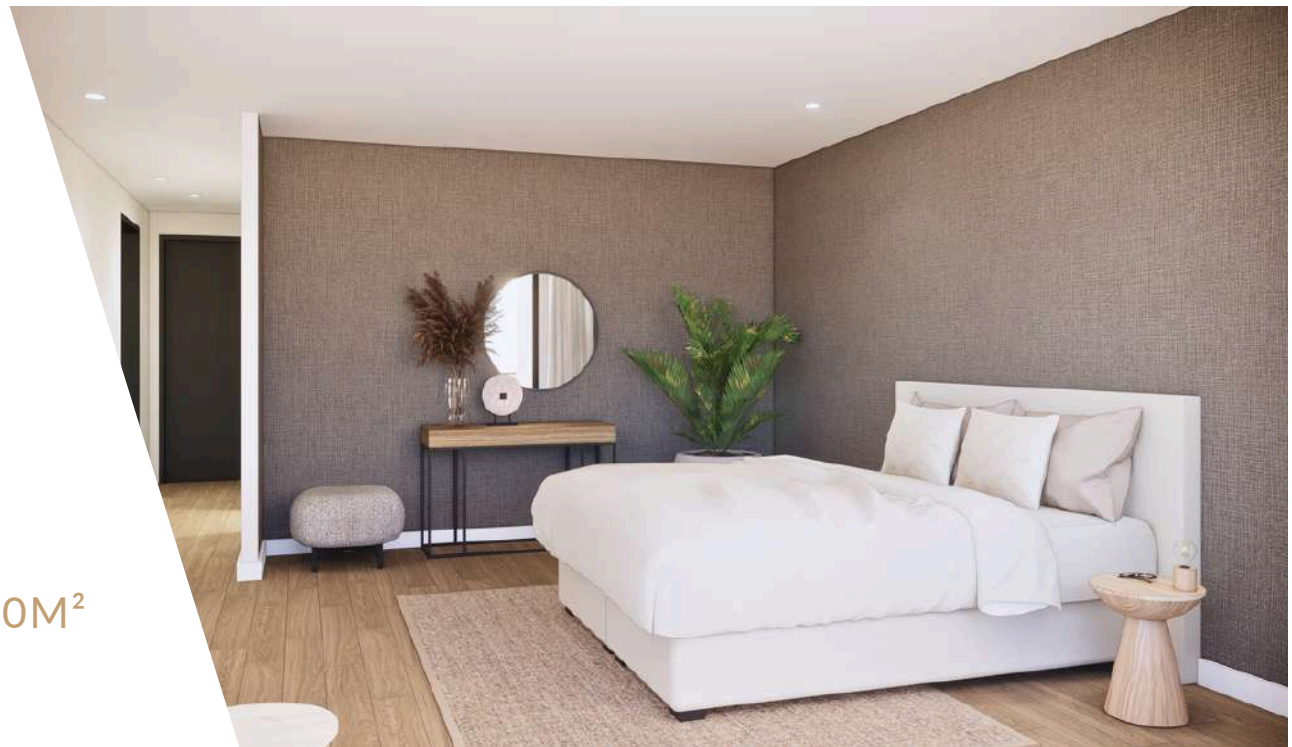
2-BEDROOM APARTMENTS

2 BEDROOM | 2.5 BATHROOM | 180M²

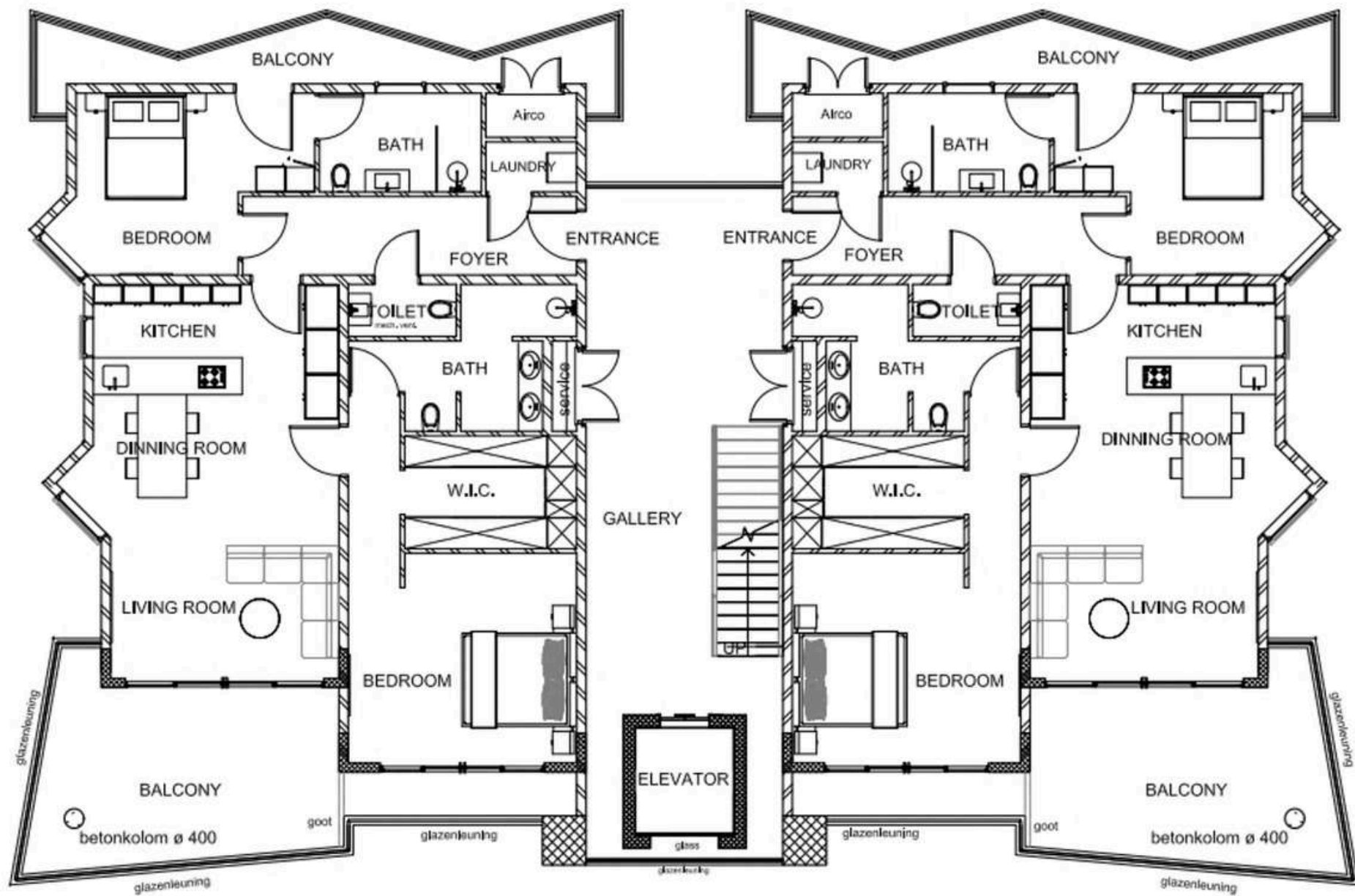
The spacious two-bedroom apartments at The View Resort & Marina are designed to offer a luxurious living experience, with breathtaking views of the Caribbean Sea from every room.

Each apartment features two generously sized bedrooms, each equipped with its own en-suite bathroom for optimal privacy and comfort.

The layout includes a stylish open kitchen with a central island, seamlessly connecting to the expansive living area. The living room opens up to a large balcony, providing the perfect space to enjoy the panoramic ocean views.



FLOORPLAN 2-BEDROOM APARTMENT



3-BEDROOM APARTMENTS

3 BEDROOM | 3.5 BATHROOM | 242M²

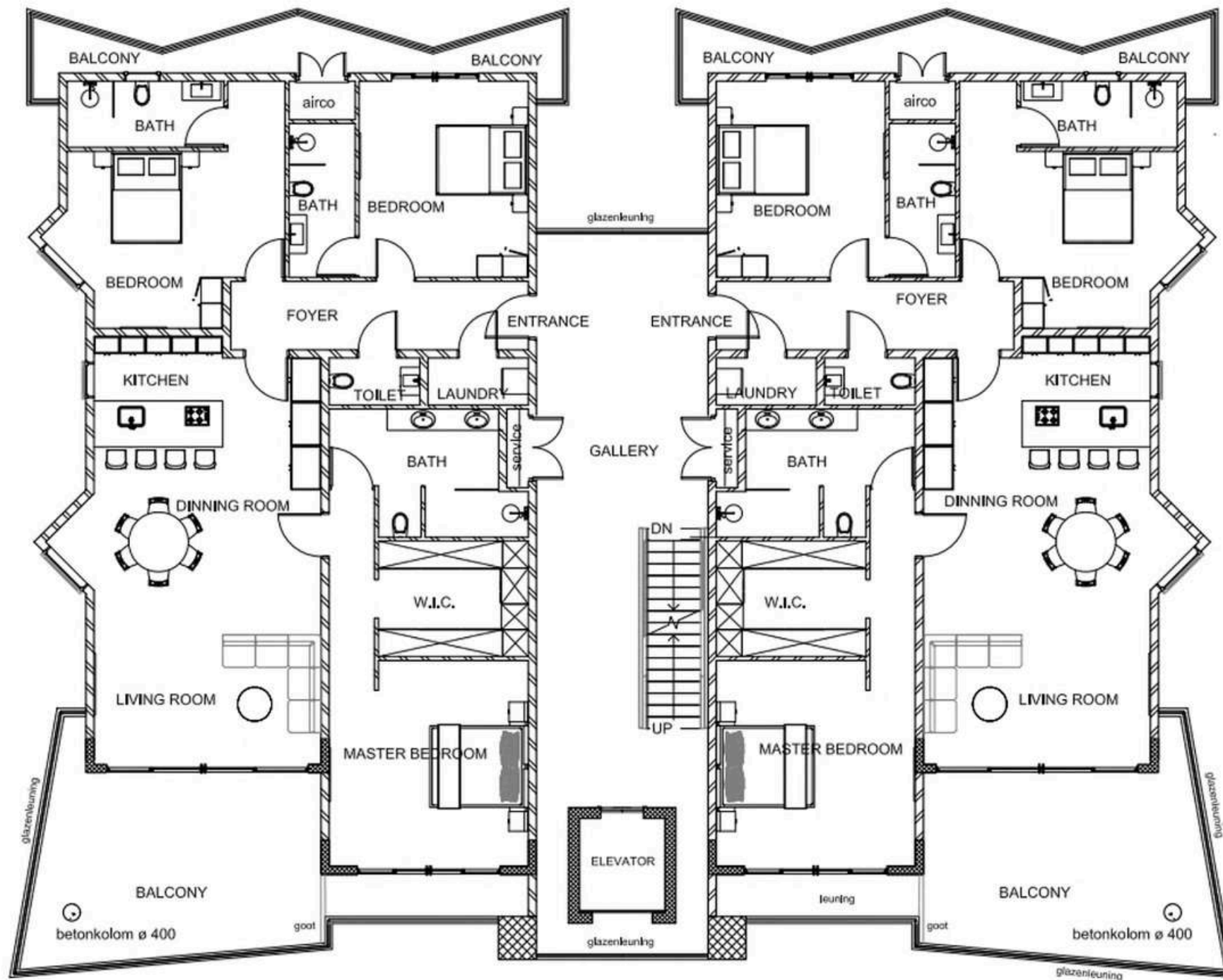
The spacious three-bedroom apartments at The View Resort & Marina offer a perfect blend of luxury and convenience in a breathtaking setting. Each apartment features a thoughtfully designed layout with three well-appointed bedrooms, ensuring comfort and privacy.

Two of the bedrooms boast stunning views of the Caribbean Sea and marina entrance, allowing you to enjoy picturesque scenery every day. The third bedroom offers a peaceful island view, providing an ideal space for relaxation.

The apartments also include a generous living area, complete with an open kitchen and central island, making it perfect for hosting gatherings or enjoying quiet family meals. The expansive balcony extends your living space, offering panoramic views of the vibrant marina activity and serene sunsets over the ocean.



FLOORPLAN 3-BEDROOM APARTMENT







PENTHOUSES

UNPARALLELED LUXURY

Each of the buildings at The View features a full-storey penthouse on the top storey spanning 400-500m². Buildings 1, 5 and 7 feature 400m² penthouses, while the penthouses in Buildings 2, 3, 4 and 6 feature penthouses spanning 500m².

The standard layout for the 400m² penthouses is a 3-bedroom layout, although early buyers can opt for a different floorplan to add an extra bedroom if desired.

The 500m² penthouses feature 5 bedrooms, including a massive master bedroom, which early buyers can decide to place on either the eastern or western side of the penthouse.

Both types of penthouses feature:

- 2 large ocean-facing balconies with sweeping views across the Caribbean Sea
- 2 private balconies accessible from the secondary bedrooms with views across the island
- Large open kitchen and living areas, all with ocean views throughout the entire room
- Fully equipped kitchens with European appliances.




THE VIEW MARINA



ABOUT THE MARINA

The View Marina is a premier facility located in the Zakitó Lagoon, developed in collaboration with International Harbour Civil Contractor (IHCC). Before construction begins, the lagoon will be fully dredged, revealing pristine white sands and transforming the water into a vibrant azure blue. Visitors will be able to enjoy the crystal-clear waters, which contribute to a beautiful and inviting tropical atmosphere.

This marina is designed to complement the luxurious lifestyle of the adjacent Resort & Marina. With 125 to 150 berths capable of accommodating yachts up to 150 feet in length, The View Marina is the ideal destination for yachting enthusiasts. Conveniently located just minutes from Willemstad and major attractions, it offers both accessibility and privacy.

Apartment owners at The View Resort & Marina enjoy private access to the marina, ensuring an exclusive experience for residents. Additionally, the nearby Marina Village offers upscale waterfront dining, boutique shopping, and leisure activities. The View Marina is truly unique in the Caribbean, offering an unparalleled yachting experience in a breathtaking environment.

OVERVIEW

AT A GLANCE

Designation

Residential usage with short- and long-term rental options.

Number of Apartments

118 luxury apartments including a number of exclusive penthouses.

Apartment Options

- Spacious 2-bedroom (approx. 180 m²)
- 3-bedroom (approx. 242 m²) apartments, plus balcony/terrace
- Full-floor penthouses (400m²+)

Transaction costs

Additional purchase costs range from 7% to 9% of the purchase price, covering taxes, land registration, legal fees, and notary costs.

Buyer Commission

No additional buyer commission; sales agent fees are covered by the developer.

Construction

- Commenced in 2021
- First apartments to be completed in the course of 2026
- Full project completion by the end of 2027

Parking

Private parking spaces available.

Ammenities

Access to the adjacent The View Marina, gym, shared swimming pool, and exclusive beach club nearby

THE
VIEW
RESORT & MARINA

Marina

The View Marina offers 125 to 150 berths, accommodating yachts up to 150 feet, with direct access to the Caribbean Sea.

Investment Potential

Ideal for permanent residence or as a rental property, offering flexibility for both long- and short-term rentals.

Contact

www.theviewcuracao.com
sales@gmfbroyal.com